



# PRODUCT PORTFOLIO

Forging a Better Future with  
customizable Steel Solutions



## ***Doing Business, the Evonith Way***

---

Here at Evonith, continuous evolution is the cornerstone of our ethos. It is not just a saying; it is a way of life. We prioritize continuous improvement and development, which allows us to stay at the forefront of the metals and mining, infrastructure, and allied industries.

Evonith, a play on 'Evolving Nithia', is the umbrella banner for the rebranded avatars of Nithia Capital's India investments in metals, mining and steel.

Nithia Capital's first investment in the steel industry is located at Wardha, Maharashtra and has been renamed Evonith Steel. The name is new, but there's a lot that hasn't changed. Especially Nithia's core values of putting people first, creating positive impact on communities, and striving for excellence.

# Evonith

---

Evolving

---

Nithia(Forever)



## I OUR VALUES



Respect for all  
We listen.  
We care.



Well-being for all  
We assure.  
We ensure.



Excellence for all  
We promise.  
We deliver.

## I THE EVONITH PROMISE

Evonith is the brand that cares. Our promise is a steadfast commitment to protecting and caring for our employees, the environment, and all stakeholders we collaborate with. Our promise is *a Better Today* through persistently striving for product and process excellence.

You can always count on us to:

- Creating a safe and secure environment for everyone
- Promoting sustainability in the community
- Building strong partnerships with stakeholders



## I OUR GLOBAL LEADERS

Evonith's global leadership comes from Nithia's trusted family of proven mettle as a successful and global investment firm.



| **Jai Saraf**

Founder & CEO - Nithia Capital  
Chairman - Evonith



| **Rajib Guha**

Partner - Nithia Capital

## I OUR EML / EVSL LEADERS

From leaders that have extensive experience in mining and metallurgy industries, to leaders who have proven results in operations, project management and strategy, Evonith has a leadership team that's truly enviable in experience and exposure. While many already come from a 'steel industry' background, others have grown into it to make it their own.



| **Anil Bangur**



| **Vijoy Kumar**



| **Birender Jee**



| **Manish Bawa**



| **Garima Kochar**



| **R. K. Sharma**



| **P. K. Patnaik**





## ***Integrated Flat Steel Producer of 21st Century***

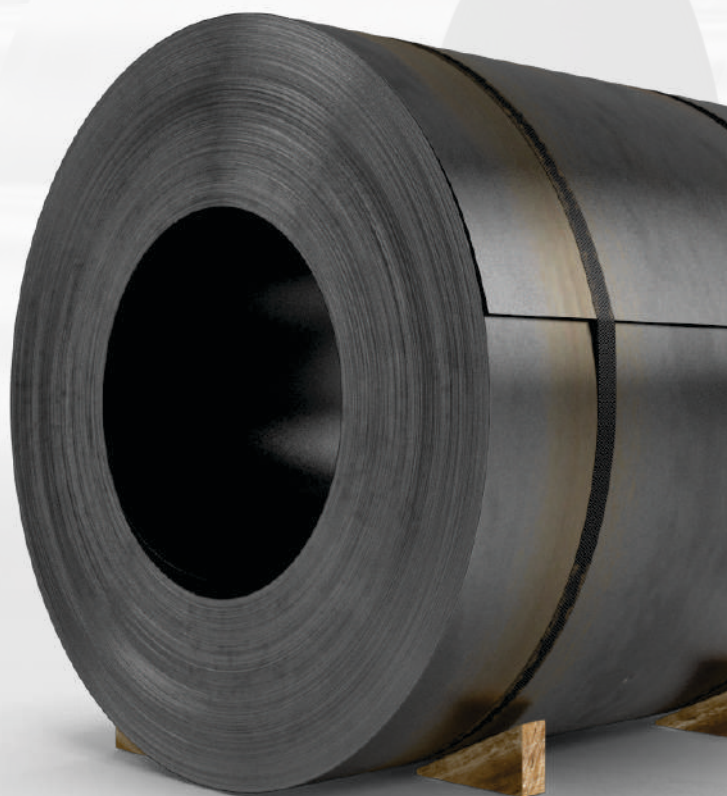
---

Nithia Capital's first investment in the steel industry is located at Wardha, Maharashtra and has been renamed Evonith Steel.

Evonith Steel is a leading integrated flat-steel producer with an impressive 1 MTPA of crude steel output at the Wardha Steel Complex alone.

We are writing our story by transforming into a new-age steel maker, but we also go beyond. We aim to be of relevance to all our stakeholders and therefore we pride civility, productivity, and sustainability as our hallmarks. With Evonith, you can count on quality every step of the way.

Evonith Steel is the evolution of the steel making facilities located at the Wardha Steel Complex, in the state of Maharashtra. The facilities at Wardha Steel Complex are made up of Evonith Metallics Limited ("EML"), and Evonith Value Steel Limited. ("EVSL")





# ***INTEGRATED FLAT STEEL PRODUCER***





## I EVONITH VALUE STEEL LIMITED (EVSL)

Our 1.0 MTPA capacity electric-arc furnaces are the unleashing force powering our operations here at EVSL, fusing recycled scrap and hot metal from EML into high-quality flat steel products. Not only does this demonstrate an impressive level of control but also allows us to reduce our carbon footprint – a welcome benefit for all stakeholders.

## I EVONITH METALLICS LIMITED (EML)

Consistency and reliability are hallmarks of our ironmaking facility, where the two cutting-edge blast furnaces produce with the capacity of hot metal – utilised by the in-house steelmaker at EVSL as well as external customers. EML's capabilities have grown significantly over time, ensuring that no one ever has to go without a steady stream of this essential product.





# Hot Rolled



Hot rolled steel is a highly versatile and reliable product utilized across diverse industries for numerous applications. One of the significant benefits of the hot rolling process includes better homogenization of the material, as it eliminates any casting defects from the steel.

Characterized by its cost-effectiveness and comprehensive mechanical properties, hot-rolled steel is a popular choice among

engineers and designers for a wide range of applications, such as automotive applications, heavy machinery, shipbuilding, railroad tracks, and structural components. The hot rolling process also facilitates enhanced surface finishes, improved pressure resistance, and optimum tensile strength, making it ideal for load-bearing structures. Evonith is a producer of high-quality hot-rolled steel.

## I APPLICATIONS



AGRICULTURE



LPG CYLINDERS



OIL & GAS PIPELINE



GENERAL CATAGORY

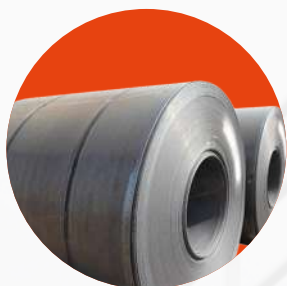


RAILWAYS

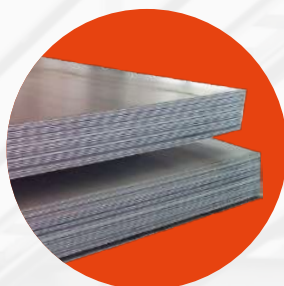


PRESSURE VESSELS

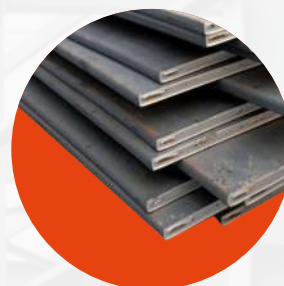
## I HOT ROLLED PRODUCTS



COILS



SHEETS



PLATES

Forms Available	Thickness Range (mm)	Width Range (mm)	Length (mm)
Coil	2 - 25	900 - 1250	—
Sheets	2 - 19	900 - 1250	2000 - 12000
Plates	20 - 150	900 - 1250	2000 - 12000



# Typical applications & grades

## DRAWING / COLD ROLLING GRADES

BIS	EN	JIS	ASTM	Other	Maximum thk. to width capability		Thickness range	YS	UTS	EL	Bend	Impact
IS-11513 O/D		JIS G3131 SPHD	SAE1006		2.0 x 900	2.60 x 1250	2 mm & above	370 MAX	240 MAX	31 MIN	close	
-	-	-	SAE1008	-	2.3 x 900	2.80 x 1250	2.3 mm & above	-	-	-	-	-
-	-	-	SAE1010	C10	2.5 x 900	3.00 x 1250	2.5 mm & above	-	-	-	-	-
-	-	-	SAE1015	C15	2.5 x 900	3.00 x 1250	2.5 mm & above	-	-	-	-	-
-	-	-	SAE1020	C20	2.5 x 900	3.00 x 1250	2.5 mm & above	-	-	-	-	-

## I MATERIAL HANDLING & MINING EQUIPMENTS

Dozers, fork lifts, dumpers, excavators, crushers, conveyors,

Cranes, wagon tipplers, reclaimers, liner plates, bins, chutes, hoppers

**High strength with superior toughness, weldability and abrasion resistance**

BIS	EN	JIS	ASTM	Other	Maximum thk. to width Capability		Thickness range	YS	UTS	EL	Bend	Impact
-	-	Evonith Hard			5 x 900	5 x 1250	5 & above	-	-	-	-	
IS-2062 E350 A/BR/BO/C	En10025 S355 J0/JR/J2	JIS G3101 SS490	ASTM572GR50 TYPE1/2/3/5	DIN-17100 St-52.3	2.5 x 900	4 x 1250	2.5 mm & above	350 MIN	490 MIN	22 MIN	2t	
IS-2062 E450 A/BR	En10025 S460N	JIS G3101 SS540	ASTM572 GR.60/65	DIN 17100 St-60.2	6.0 X 900	6 x 1250	6.0 mm & above	450 MIN	570 MIN	20 MIN	3t	

## I BOILERS & PRESSURE VESSELS

**Super critical high temperature & pressure applications**

BIS	EN	JIS	ASTM	Other	Maximum thk. to width capability		Thickness range	YS	UTS	EL	Bend	Impact
-	-	-	SA-387 Gr.11 Class 1/2		4 X 900	4.5 X 1250	4 mm & above	240 MIN	415 - 585	22 MIN	-	-
-	-	-	SA-387 Gr.11 Class 1/2	-	4 X 900	4.5 X 1250	4 mm & above	230 MIN	380 - 550	22 MIN	-	-
-	-	-	SA-387 Gr.22 Class 1/2	-	4 X 900	5 X 1250	4 mm & above	205 MIN	415 - 585	18 MIN	-	-
-	-	-	-	15 MO3 / 16 MO3	3.5 X 900	5 X 1250	3.5 mm & above	275 MIN	485-590	23 MIN	-	-
-	-	-	ASTM A285 GR A/B/C	-	2 X 900	3.15 X 1250	2 mm & above	205 MIN	380-515	27 MIN	-	-
-	-	-	ASTM A204 GR A/B	-	4 X 900	5 X 1250	4 mm & above	275 MIN	485-620	21 MIN	-	-

**Moderate temperature & pressure applications**

BIS	EN	JIS	ASTM	Other	Maximum thk. to width capability		Thickness range	YS	UTS	EL	Bend	Impact
-	-	-	ASTM A-516 GR. 55		2 X 900	3.15 X 1250	2 mm & above	205 MIN	380-515	27 MIN	-	-
IS-2041 R220	-	-	ASTM A-516 GR. 60	-	3 X 900	3.50 X 1250	3 mm & above	220 MIN	415-550	25 MIN	3t	As per capability
IS-2041 R260	-	-	ASTM A-516 GR. 70	-	3 X 900	5.0 X 1250	3 mm & above	260 MIN	485-620	21 MIN	3t	-



## Intermediate & high temperature & pressure applications

BIS	EN	JIS	ASTM	Other	Maximum thk. to width capability		Thickness range	YS	UTS	EL	Bend	Impact
IS-2002 GR. I	-	-	-	-	3 X 900	5.0 X 1250	3 mm & above	235 MIN	360-480	24 MIN	3t	As per standards
IS-2002 GR. II	-	-	-	-	3 X 900	5.0 X 1250	3 mm & above	265 MIN	410-523	22 MIN	3t	As per standards
-	-	-	ASTM A-515 GR. 60	-	3 X 900	5.0 X 1250	3 mm & above	220 MIN	415-550	25 MIN	-	-
-	-	-	ASTM A-515 GR. 70	-	3 X 900	5.0 X 1250	3 mm & above	260 MIN	485-620	21 MIN	-	-

## Low & intermediate temperature & pressure applications

BIS	EN	JIS	ASTM	Other	Maximum thk. to width capability		Thickness range	YS	UTS	EL	Bend	Impact
-	-	-	ASTM A285 GR A/B/C	-	2 X 900	3.15 X 1250	2 mm & above	205 MIN	380-515	27 MIN	-	-



## LINE PIPES

For oil and gas transportation



BIS	EN	JIS	ASTM	Other	Maximum thk. to width capability		Thickness range	YS	UTS	EL	Bend	Impact
IS-10748-I	-	JIS G3132 SPHT 1	-	-	2.0 x 900	2.80 x 1250	2.0 mm & above	170 MIN	290 MIN	30 MIN	2t	-
IS-10748-II	-	JIS G3132 SPHT 2	-	-	2.5 x 900	3.00 x 1250	2.5 mm & above	210 MIN	330 MIN	28 MIN	2t	-
IS-10748-III	-	JIS G3132 SPHT 3	-	-	3.0 x 900	5.0 x 1250	3.0 mm & above	240 MIN	410 MIN	25 MIN	2t	-
IS-10748-IV	-	-	-	-	3.0 x 900	5.0 x 1250	3.0 mm & above	275 MIN	430 MIN	20 MIN	3t	-
IS-10748-V	-	-	-	-	3.0 x 900	6.0 x 1250	3.0 mm & above	310 MIN	490 MIN	15 MIN	3t	-
API 5L GR.B	-	-	-	-	4.0 x 900	6.0 x 1250	4.0 mm & above	241-448	414-758	28 MIN	2t	-
API 5L X-42	-	-	-	-	4.0 x 900	6.0 x 1250	4.0 mm & above	241-448	414-758	28 MIN	2t	As per standards
API 5L X-46	-	-	-	-	4.0 x 900	6.0 x 1250	4.0 mm & above	317-524	434-758	28 MIN	2t	-
API 5L X-52	-	-	-	-	5.0 x 900	6.0 x 1250	5.0 mm & above	359-531	455-758	25 MIN	2t	-
API 5L X-56	-	-	-	-	5.0 x 900	6.0 x 1250	5.0 mm & above	386-544	490-758	25 MIN	2t	-
API 5L X-60	-	-	-	-	5.0 x 900	6.0 x 1250	5.0 mm & above	414-565	517-758	25 MIN	2t	-
API 5L X-65	-	-	-	-	5.0 x 900	8.0 x 1250	5.0 mm & above	448-600	531-758	22 MIN	2t	-
API 5L X-70	-	-	-	-	5.0 x 900	6.0 x 1250	5.0 mm & above	483-621	565-758	22 MIN	2t	-



## LPG CYLINDER GRADES

BIS	EN	JIS	ASTM	Other	Maximum thk. to width capability		Thickness range	YS	UTS	EL	Bend	Impact
IS-6240 I / II	EN 10028-2 P235	JIS G3116 SG255	ASTM A285 GR-B	-	2.5 x 900	2.90 X 1250	2.5 mm & above	240 MIN	350 - 450	25 MIN	1t	-



## TRANSMISSION & TELECOM TOWERS

**Tower base & body, medium to high strength with superior weld-ability**

BIS	EN	JIS	ASTM	Other	Maximum thk. to width capability		Thickness range	YS	UTS	EL	Bend	Impact
IS-2062 E350 A/BR/BO/C	En10025 S355J0/JR/J2	JIS G3101 SS490	ASTM572 GR50TYPE1/2/3/5	DIN-17100 St-52.3	2.5 x 900	4 X 1250	2.5 mm & above	350 MIN	490 MIN	22 MIN	2t	-
IS-2062 E450 A/BR	En10025 S460N	JIS G3101 SS540	ASTM572 GR.60/65	DIN 17100 St-60.2	6.0 X 900	6 X 1250	6.0 mm & above	450 MIN	570 MIN	20 MIN	3t	-





## AUTOMOBILE APPLICATIONS

**HCV, MCV, LCV –  
Chassis components,  
structural members, wheels,  
clutch parts**



BIS	EN	JIS	ASTM	Other	Maximum thk. to width capability		Thickness range	YS	UTS	EL	Bend	Impact
IS-1079 Hr0/HR1/HR2 / HR3 / HR4		JIS G 3113 SAPH310	-	-	2.0 x 900	2.80 x 1250	2 mm & above	-	400 MAX	29 MIN	1t	
IS-5986 ISH290S/330S	-	-	-	-	2.0 x 900	2.80 x 1250	2 mm & above	205 MIN	330 - 440	28 MIN	1t	-
IS-5986 ISH360S/410S	-	JIS G3113 SAPH370/400	ASTM A283 GR C/D	-	2.0 x 900	2.80 x 1250	2 mm & above	230 MIN	415 MIN	25 MIN	1t	-
-	-	-	-	E-34	2.5 x 900	3.80 x 1250	2.5 mm & above	334 - 412	393 - 490	27 MIN	0.5t	-
-	-	JIS G3113 SAPH440	-	E-38	2.5 x 900	5.00 x 1250	3 mm & above	373 - 461	442 - 559	25 MIN	0.5t	-
IS-5986 ISH490S	-	JIS G3134 SPFH 490	-	E-42/E-46/BSK-46	3.0 x 900	6.00 x 1250	3 mm & above	450 - 530	490 - 610	21 MIN	1t	-

## ALLOY STEEL GRADES

BIS	EN	JIS	ASTM	Other	Maximum thk. to width capability		Thickness range	YS	UTS	EL	Bend	Impact
-	En19	-	SAE 4140	GOST 30X TCA	3.5 x 900	5.0 x 1250	3.5 mm & above	-	-	-	-	-
-	-	-	-	50 Cr V4 (M)	3.5 x 900	5.0 x 1250	3.5 mm & above	-	-	-	-	-
-	-	-	-	25 Cr Mo4 / 42 Cr Mo4	3.5 x 900	5.0 x 1250	3.5 mm & above	-	-	-	-	-
-	En24	-	-	15Cr3 / 15Cr13Mo6	4.0 x 900	6.0 x 1250	4.0 mm & above	-	-	-	-	-
-	-	-	-	55Si7	5.0 x 900	5.0 x 1250	5.0 mm & above	-	-	-	-	-

## CASE HARDENING GRADES

BIS	EN	JIS	ASTM	Other	Maximum thk. to width capability		Thickness range	YS	UTS	EL	Bend	Impact
-	-	-	-	16MnCr5	3.5 x 900	6.0 x 1250	3.5 mm & above	-	-	-	-	-
-	-	-	-	20MnCr5	4 x 900	6.0 x 1250	4.0 mm & above	-	-	-	-	-
-	En18 / EN18D	-	-	En18 / EN18D	6.0 x 900	8.0 x 1250	6.0 mm & above	-	-	-	-	-
-	-	-	-	16MnCr5	3.5 x 900	6.0 x 1250	3.5 mm & above	-	-	-	-	-
-	-	-	-	20MnCr5	4.0 x 900	6.0 x 1250	4.0 mm & above	-	-	-	-	-
-	-	-	-	SCM415/SCM 435	4.0 x 900	6.0 x 1250	4.0 mm & above	-	-	-	-	-

## CARBON STEEL GRADES

Chain sprockets, wheel rim hubs, cutting tools,  
Springs, industrial blades /saws and for cold rolling application



BIS	EN	JIS	ASTM	Other	Maximum thk. to width Capability		Thickness range	YS	UTS	EL	Bend	Impact
30C8/C-30	-	-	SAE-1030	-	2.5 x 900	4.0 x 1250	2.50 mm & above	-	-	-	-	-
C-35	-	-	SAE-1035	-	2.5 x 900	4.0 x 1250	2.50 mm & above	-	-	-	-	-
C-40	En8	-	SAE-1040	-	2.5 x 900	4.0 x 1250	2.50 mm & above	-	-	-	-	-
C-45	-	-	SAE1045	Mc11	2.5 x 900	4.0 x 1250	2.50 mm & above	55% of UTS	630-710	15 MIN	-	-
C-50	-	-	SAE1050	-	2.7 x 900	5.0 x 1250	2.70 mm & above	-	-	-	-	-
C-55	En9	-	SAE-1055	Mc12	2.7 x 900	5.0 x 1250	2.70 mm & above	-	-	-	-	-
C-60	-	-	SAE 1060	-	2.7 x 900	5.0 x 1250	2.70 mm & above	-	-	-	-	-
C-62 / C-65	-	-	SAE 1065	-	2.7 x 900	6.0 x 1250	2.70 mm & above	-	-	-	-	-
C-70	-	-	SAE 1070	-	3.0 x 900	6.0 x 1250	3.00 mm & above	-	-	-	-	-
C-75	-	-	SAE 1075	-	3.5 x 900	6.0 x 1250	3.50 mm & above	-	-	-	-	-
C-80	-	-	SAE 1080	-	3.5 x 900	10.0 x 1250	3.50 mm & above	-	-	-	-	-
C-85	-	-	SAE 1085	-	4.0 x 900	10.0 x 1250	4.00 mm & above	-	-	-	-	-



## ATMOSPHERIC CORROSION RESISTANT STEEL FOR STRUCTURAL AND HEAT EXCHANGERS

BIS	EN	JIS	ASTM	Other	Maximum thk. to width Capability		Thickness range	YS	UTS	EL	Bend	Impact
IS2062E450 A/BR-Cu	EN 10025 S355J2W	JISG3114 SMA490BW	ASTM A588 GRA/B	-	5.0 x 900	6.0 X 1250	5 mm & above	355 MIN	490 MIN	22 MIN	-	-
IS2062E250 A/BR/C-Cu	-	JISG3125 SPA-H	ASTM A606	IRSM41-97/ CORTEN-A	2.5 X 900	3.15 X 1250	2.5 mm & above	345 MIN	485 MIN	22 MIN	1t	-



## CHEQUERED COILS / SHEETS



BIS	EN	JIS	ASTM	Other	Maximum thk. to width capability		Thickness range	YS	UTS	EL	Bend	Impact
IS-3502	-	-	ASTM A786	-	5.0 x 900	5 x 1250	5 mm & above	250 MIN	410 MIN	23 MIN	2t	-

## BUILDING & CONSTRUCTION

Pre engineered buildings – columns, rafters, purlins,  
side wall grits and industrial flooring

BIS	EN	JIS	ASTM	Maximum thk. to width capability		Thickness range
IS 2062 E 350 A/BR/BO/C	EN 10025 S 355 JR	-	-	2.5/900	4/1250	2.5 & Above
IS 2062 E 350 A/BR/BO/C	EN 10025 S 355 J2	-	ASTM 572 GR 50	2.5/900	4/1250	2.5 & Above
IS 2062 E 450 A/BR	-	-	-	2.5/900	6/1250	2.5 & Above
IS 2062 E 250 A/B	EN 10025 S 275 JO	JIS G 3101 SS 400	ASTM A 36	2.5/900	4/1250	2.5 & Above
IS 2062 E 250 C	EN 10025 S 275 J2	JIS G 3106 SSM 400C	ASTM A 36	2.5/900	4/1250	2.5 & Above
IS 2062 E 250 -Cu	-	-	ASTM A 36-Cu	5/900	10/1250	5 & Above





## AGRICULTURAL GRADES

BIS	EN	JIS	ASTM	Other	Maximum thk. to width capability		Thickness range	YS	UTS	EL	Bend	Impact
-	-	-	-	28MnB5 / 30MnB5	5 X 900	6 X 1250	6 mm & above	205 MIN	380-515	-	-	-
-	-	-	-	B44	6 X 900	8 X 1250	6 mm & above	220 MIN	415-550	-	-	-
-	-	-	-	SAE 15B41	4 X 900	8 X 1250	4 mm & above	260 MIN	485-620	-	-	-





## WAVINESS TOLERANCE AS PER ASTM A6

Permitted variation for flatness (in mm)	Permitted variation in waviness in mm, when number of waves in 4000 mm is						
	1	2	3	4	5	6	7
8	8	6	5	3	3	2	2
10	10	8	5	5	3	2	2
11	11	8	6	5	3	3	2
13	13	10	8	5	5	3	2
14	14	11	8	6	5	3	2
16	16	13	10	6	5	3	2
17	17	13	10	8	5	5	2
19	19	14	11	8	6	5	2
21	21	16	11	8	6	5	2
22	22	17	13	10	6	5	2
24	24	17	13	10	8	6	5

## Service Centre Facilities

	HR CTL 1	HR CTL 2	Narrow CTL	HR SLITTER
Thickness (mm)	2-7	6 to 25	2 to 12	2-12
Width (mm)	400-1250	900-1250	100-600	100-600
Length Max (mm)	12000	12000	12000	
Length , Min (mm)	1700	2500	2600	

## MARKING & INSPECTION

Marking	Heat no/ coil no / size / material grade / specification / in case of is specification, ISI monogram with number will be marked
Video Jet Printing	Can be provided for plates
Third Party Inspection	Either customer appointed agency or SGS appointed by EVSL





# Tolerances

## THICKNESS, WIDTH & LENGTH TOLERANCES

Nominal thicknesses in mm	Thickness tolerances		Width tolerances	Length tolerances
	for all width as per ASTM A6	for all width as per IS 1852	for all width	for all width
2 to < 16	+0.30/-0.30	+0.30/-0.30	+20/-0	+30/-0
16 to 20	+0.80/-0.30	+5%/-5%	+20/-0	+30/-0
20 to < 25	+0.90/-0.30	+5%/-5%	+20/-0	+30/-0
28	+1.0/-0.30	+5%/-5%	+20/-0	+30/-0
30	+1.10/-0.30	+5%/-5%	+20/-0	+30/-0
32	+1.20/-0.30	+5%/-5%	+20/-0	+30/-0
35	+1.30/-0.30	+5%/-5%	+20/-0	+30/-0
38	+1.40/-0.30	+5%/-5%	+20/-0	+30/-0
40	+1.50/-0.30	+5%/-5%	+20/-0	+30/-0
45	+1.60/-0.30	+5%/-5%	+20/-0	+30/-0
50	+1.80/-0.30	+5%/-5%	+20/-0	+30/-0
55	+2.0/-0.30	+5%/-5%	+20/-0	+30/-0
60	+2.30/-0.30	+5%/-5%	+20/-0	+30/-0
63	+2.50/-0.30	+5%/-5%	+20/-0	+30/-0

## FLATNESS & CAMBER TOLERANCES

Nominal thicknesses in mm	Flatness as per ASTM A6 for carbon steel			Flatness as per ASTM A6 for alloy steel			Camber as per IS 5986 (% of length)	Camber as per ASTM A6	
	for width 900	900-1200	1200-1250	for width 900	900-1200	1200-1250		for carbon steel (in mm)	for alloy steel (in mm)
2 to < 16	14	19	24	21	29	35	0.5	500	250
16 to 20	13	16	19	19	24	29	0.5	500	250
20 to < 25	13	14	16	19	22	24	0.5	500	250
28	13	14	16	16	19	22	0.5	500	250
30	11	13	14	16	19	22	0.5	500	250
32	11	13	14	16	19	22	0.5	500	250
35	10	13	13	14	13	19	0.5	500	250
38	8	10	11	13	14	18	0.5	500	250



# Supply Conditions

HR Coils	HR CTL	HR slitter-1	HR slitter-2	Narrow CTL	Plates	Remark(s)
Edge condition	Mill edge*	Mill edge	Reasonably free from burr		Reasonably free from burr	Mill edge
Marking	Heat no / coil no / size / material grade/ specification / in case of is specification, ISI monogram with number will marked					
Video jet printing	NA	Yes	NA	NA	Yes	NA
Telescopicity	100mm max, aiming at 50 mm	NA	10mm, MAX	10mm, MAX	NA	NA
Fish end / tail end	500 mm each max	Free form fish end / tail end				
Third party inspection	Either customer appointed agency or SGS appointed by EVSL					

\* Limited quantity up to 3 mm can be supplied in trimmed edge





## Cold Rolled



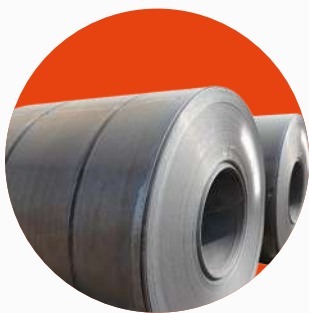
Our cold rolled coils and sheets are revolutionizing industries like automobile & packaging and powering applications in power plants and industrial equipment. Our state-of-the-art cold rolling process transforms hot rolled pickled product into polished masterpieces that showcase finesse, durability, and versatility.

Evonith cold rolled steel offers a remarkable surface finish, enhanced physical properties,

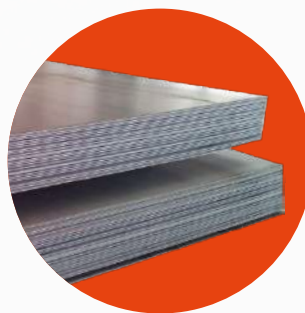
and tailored thickness — all brought together with unparalleled precision in our Cold Rolled Closed Annealed (CRCA) sheets. Plus, our extensive range of value-added cold rolled steel products are designed to exceed your expectations and fuel your ambitions. Choose Evonith cold rolled steel and embrace the future of strong engineering.



## I COLD ROLLED PRODUCTS



COILS

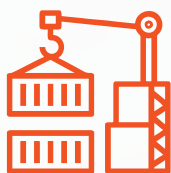


SHEETS

## I APPLICATIONS



PACKAGING INDUSTRY



MARINE CONTAINERS



COACH BUILDING



ESP APPLICATION

## EVSL CRCA MILL CAPABILITY

BIS	EN	JIS	ASTM	Other	Maximum thk. to width capability		Thickness range	YS	UTS	EL	Bend	Hardness
-	-	JISG3125 SPA-C	ASTM A606	IRSM41-97/CORTEN-A	0.60 x 900	0.80 x 1250	0.60 to 2.50 mm	345 MPA min	485 MPA min	22 MIN	Close	-

## EVSL CRFH MILL CAPABILITY

BIS	EN	JIS	ASTM	Other	Maximum thk. to width capability		Thickness range	YS	UTS	EL	Bend	Hardness
-	-	-	-	SAE -1008/1010	0.38 X 900	2.0 x 1250	0.38 to 2 mm	-	-	-	-	85 HRb min
-	-	-	-	C20	0.50 X 900	2.0 x 1250	0.50 x 2 mm	-	-	-	-	85 HRb min
-	-	-	-	C30	0.58 X 900	2.0 x 1250	0.58 x 2 mm	-	-	-	-	85 HRb min
-	-	-	-	C40	0.58 X 900	2.0 x 1250	0.58 x 2 mm	-	-	-	-	85 HRb min
-	-	-	-	Mc11	0.58 X 900	2.0 x 1250	0.58 x 2 mm	-	-	-	-	85 HRb min
-	-	-	-	C50	1.12 X 900	2.0 x 1250	1.12 x 2 mm	-	-	-	-	85 HRb min

Thickness tolerances  $\pm 0.05$  mm

Width tolerances for trim edge  $\pm 0.50$  mm

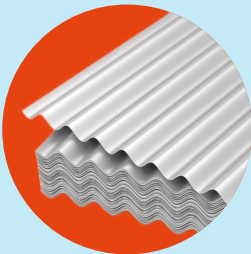
Minimum trim width 100 mm

Maximum trim width 1235 mm

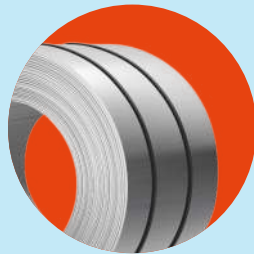


***The ultimate combination of strength, durability and protection.***

The newly renamed, Neelpankh, galvanized steel coils and corrugated sheets from Evonith Steel, continue to be the pinnacle of corrosion resistance and endurance. Our Neelpankh products are made to withstand the harshest environmental conditions, due to the superior zinc-iron alloy that forms a strong barrier against moisture and corrosion. Our galvanizing process offers unmatched adhesion and abrasion resistance, making it the ideal Suraksha Kavach (armor) for even the most testing and demanding conditions. Choose Neelpankh, our galvanized steel coils and sheets (plain/corrugated) for greater quality, strength and everlasting performance.



CORRUGATED SHEETS



GALVANISED COILS



GALVANISED SHEETS





## I GALVANIZED PLAIN COILS & SHEETS

Presenting Neelpankh, a brand of premium, unique galvanised products. The usage of adaptable, lightweight galvanised materials in India was revolutionised by Neelpankh, We provide an extensive range of GP coils and sheets, with widths ranging from 900 to 1250 mm

### GP Segment, Grade, Thickness, Width & Coating-wise Capability

Segment	Grade Width (mm)	Thickness (mm)	Width (mm)	Coating (GSM)
Full Hard	IS 277 : GPH	0.20 - 0.39	900 - 1000	80 - 180
		0.40 - 0.60		80 - 275
Ordinary (Soft)	IS 277 : GP 'O', GP 275 ASTM A 653 CS TYPE B, SS Gr 40, EN 10346 DX 51 D S280 GD	0.25 - 0.34	900 - 1000	80 - 120
		0.35 - 0.49	900 - 1250	80 - 180
		0.50 - 1.20	900 - 1250	80 - 275
		1.21 - 1.60	1200	80 - 200
Structural	IS 277 GP 300, GP 350 CI 1 & 2, ASTM A 653 SS Gr 50, En10346 S320 GD, S350 GD	0.60 - 1.20	900 - 1250	80 - 275
		1.21 - 1.60	1220	80 - 200

\*Can also be supplied in sheet form

\*Slit coils available from 30 mm to 899 mm width

## I GALVANIZED CORRUGATED SHEETS

Neelpankh GC sheets offer a versatile and cost-effective solution for roofing needs. With excellent protection against severe weather, they can be used in a range of applications, providing optimal weatherproofing through precise measurements and high tensile strength. 13 corrugations and 13% greater width than typical GC sheets offer excellent value for money, covering more area with fewer sheets. Certified by the Bureau of Indian Standards and readily available throughout India, Neelpankh GC sheets are the ideal choice for durability and affordability.

Grades available	Thickness range (mm)	Width range (mm)	Length (mm)	No. of corrugation
IS 277	0.20 - 0.60	740 - 800	2440 - 4880	11
IS 277	0.20 - 0.60	880 - 910	2440 - 4880	13
IS 277	0.35 - 0.50	1220	2440 - 4880	16

The ultimate combination of  
**strength and sustainability!**





## | APPLICATIONS

Industrial Roofing & Cladding | Railways | Warehouses | Shelters  
House Roofing | Fencing | Green House | Porches | Side Walls | Cattle Shed



PEB Structure



Solar Panels



Industrial Roofing & Cladding



Pipes and Tubes



Cattle Shed



Fencing



**Contact us today to request a quote.**



**+91-22-4155 7000**



**salesenquiry@evonith.com**

## **EVONITH VALUE STEEL LIMITED**

(Former Uttam Value Steel Limited)



Wardha Steel Complex, Bhugaon Link road,  
Wardha – 442001, Maharashtra, India.



**www.evonith.com**

**Scan the QR Code  
for more details**

